

# ONTWERP

08/05

# ONTWERP Nº I

# ONDERDELEN Nº II

# TEKST Nº III

# Nº I ONTWERP

# ontwerpparameters

## CONCEPTUEEL

Nº I : 1 WERKVLAK  
verschillende mensen  
verbinden

Nº II : SAMENWERKEN  
grote afstanden  
genoodzaakt elkaar helpen

Nº III : LINKEN LOCATIE  
aanwezigheid industrie  
aanwezigheid wasteland

Nº IV : POTLUCK  
belang van samen tafelen  
ontwerp als gespreksstarter

Nº V : OPVALLEN  
in industrie landschap  
in wasteland context

Nº VI :  
...  
...

Nº VII :  
...  
...

NºVIII :  
...  
...

## ONTWERPMATIG

Nº I : HOOGTES WERKBLAD  
aangepast aan functie

Nº II : BREEDTES WERKBLAD  
aangepast aan reikwijdte  
gemiddelde mens

Nº III : AFSTAND  
af te leggen afstand te groot  
gedwongen communicatie

Nº IV : OPBOUW  
volgens kookproces  
opeenvolgende kookclusters

Nº V : POTLUCK  
één lange tafel ipv verschillen-  
de kleine

Nº VI :  
...  
...

Nº VII :  
...  
...

NºVIII :  
...  
...

## PRAKTISCH

Nº I : BEREIKBAARHEID  
ingrediënten  
andersvaliden

Nº II : VOORZIENINGEN  
water  
elektriciteit

Nº III : ZICHTBAARHEID  
vanuit dorp  
vanuit industrie

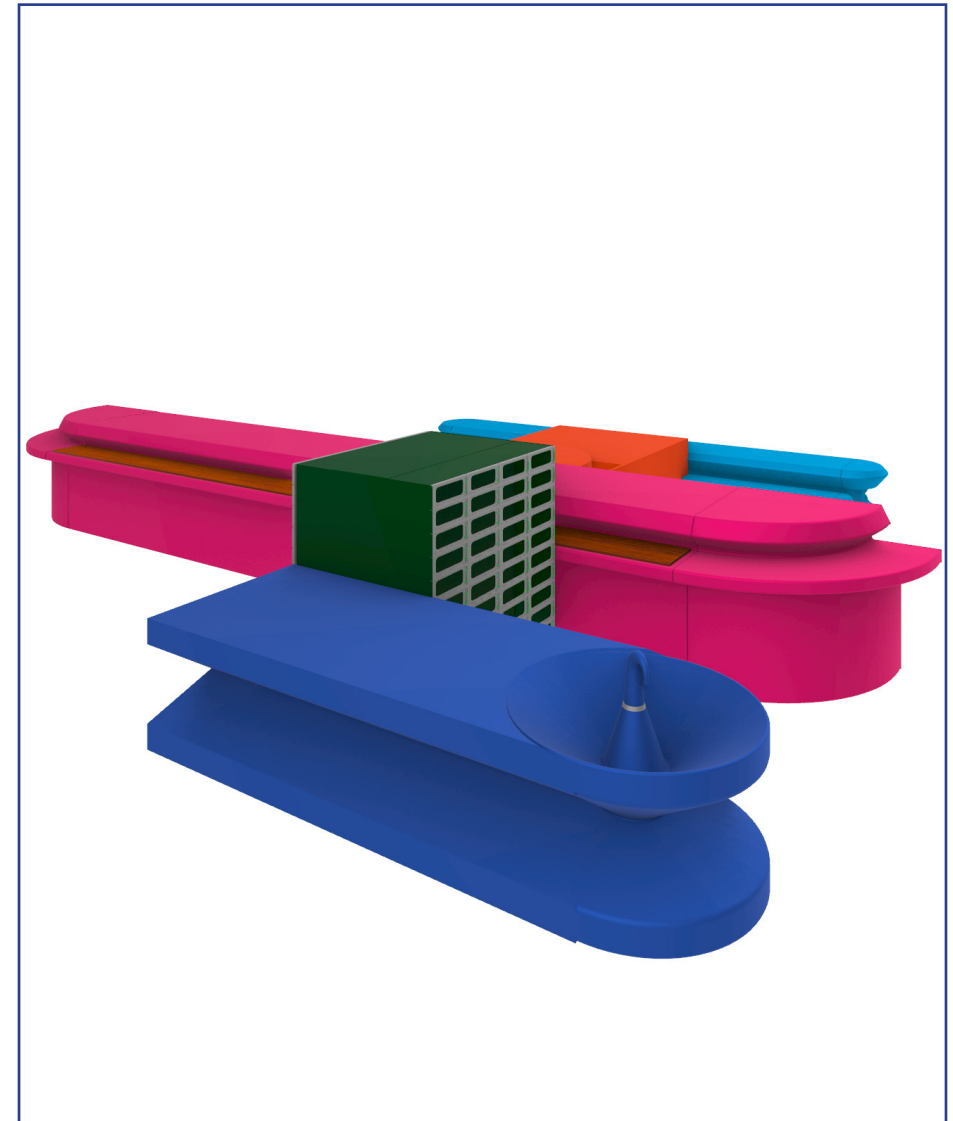
Nº IV : WEER  
zon/regen beschutting  
wind beschutting

Nº V : RIGIDE  
bestand tegen klimaat  
bestand tegen vandalisme

Nº VI : AFVALVERWERKING  
composteren  
sorteren

Nº VII : AFSTAND  
reikwijdtes, hoogtes en  
wandelaafstand

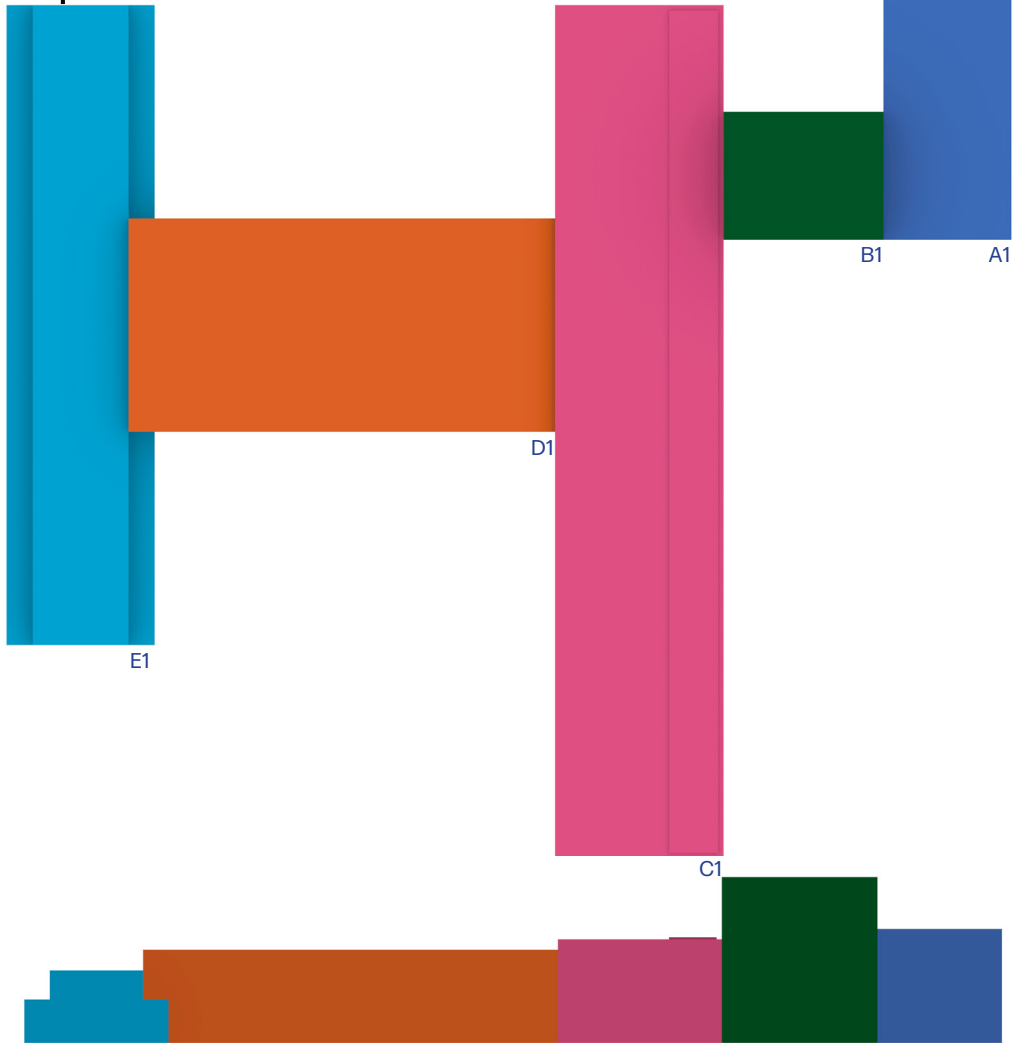
NºVIII :  
...  
...



MOCKUP



## plannen schematisch



## AFMETINGEN KOOKCLUSTERS

A1  
H: 1100 x B: 1200 x D: 3500 mm

C1  
H: 1000 x B: 1580 x D: 8000 mm

E1 tafel  
H:700 x B: 900 x D: 6000 mm

B1  
H: 1600 x B: 1500 x D: 1200 mm

D1  
H: 900 x B: 4000 x D: 2000 mm

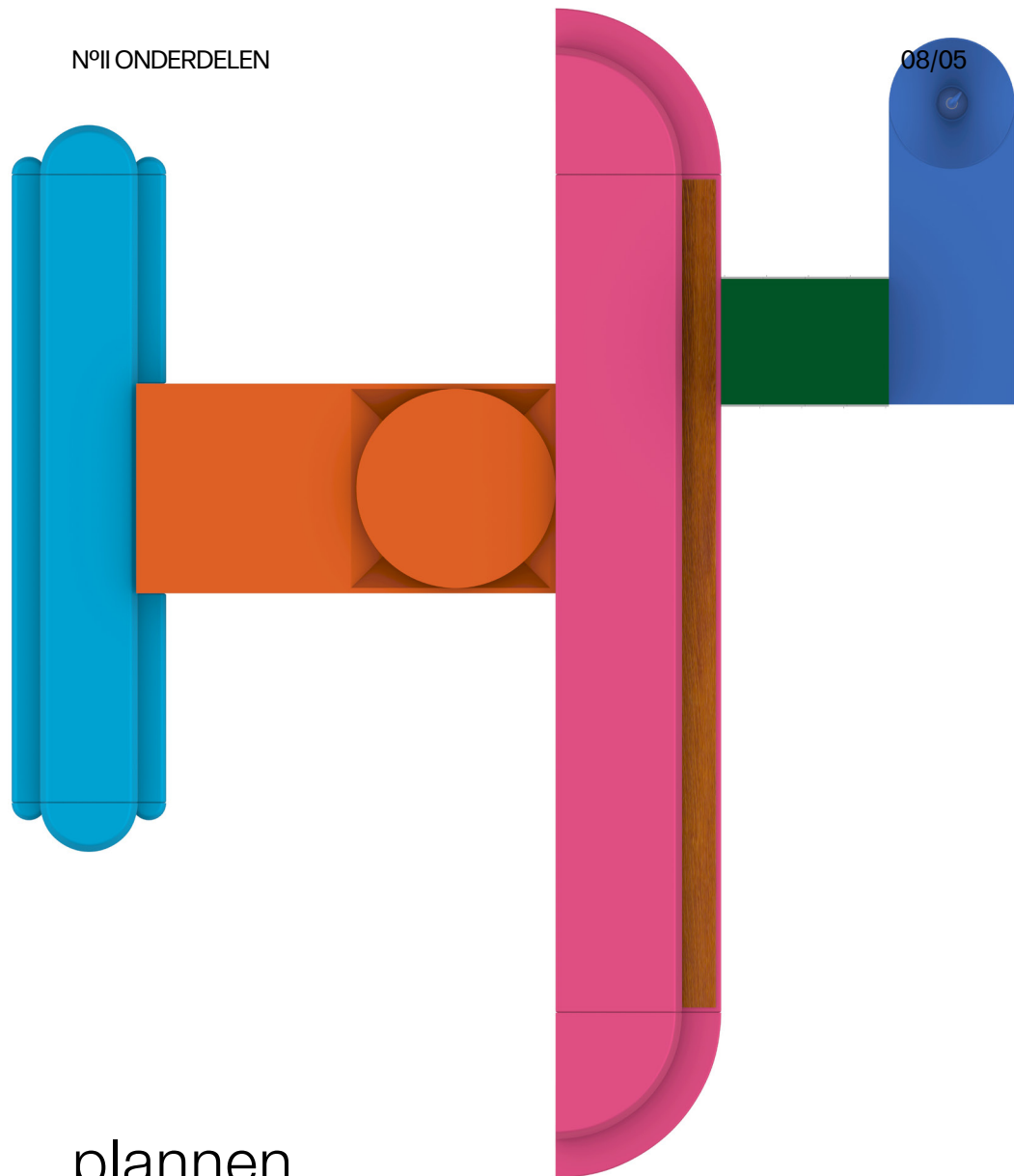
E1 bank  
H: 420 x B: 245 x L: 6000 mm

08

The diagram consists of two horizontal bars. The top bar is composed of several colored segments: a blue segment on the left, followed by a pink segment, then a blue segment, then a brown segment, then a pink segment, and finally a green segment on the right. The bottom bar is composed of a pink segment on the left, followed by a blue segment, and then a green segment on the right. The green segments of both bars are aligned vertically.

09

NºII ONDERDELEN



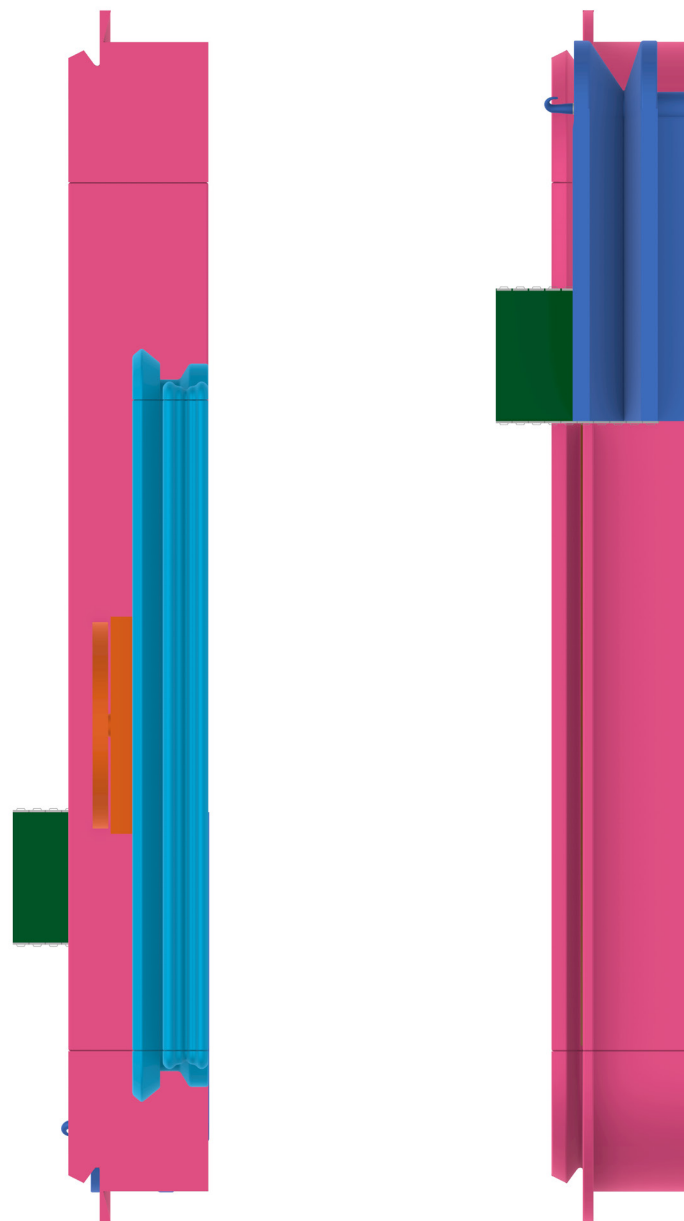
08/05

plannen



10

PLANNEN



11

Nº1 ONTWERP



DOEL

INSPIRATIEBEELD

Nº1 ONTWERP



DOEL

INSPIRATIEBEELD



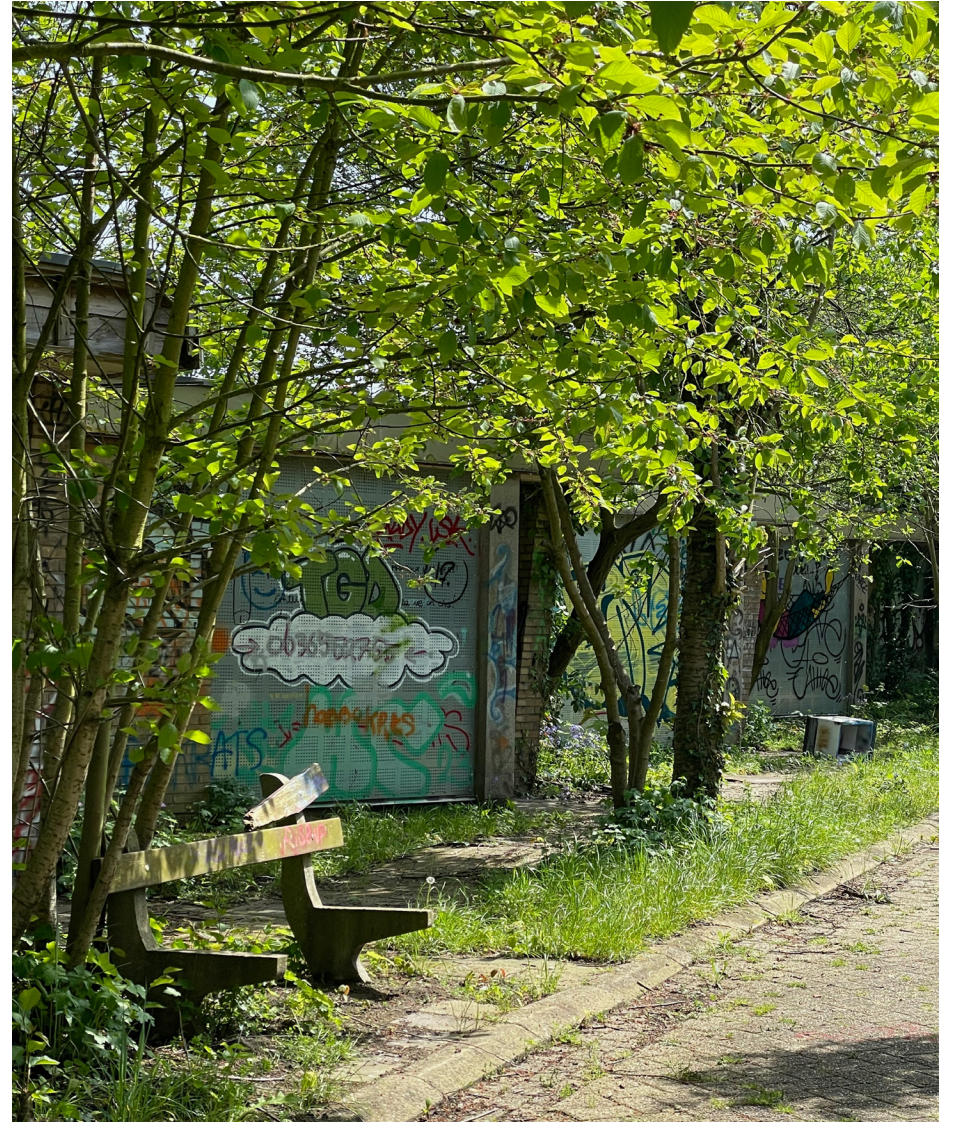
Nº1 ONTWERP



DOEL

INSPIRATIEBEELD

Nº1 ONTWERP



DOEL

INSPIRATIEBEELD

# kleurgebruik

A1

...

...

HEX: 25408F

B1

...

...

HEX: 345339

C1

...

...

HEX: EC008C

D1

...

...

HEX: E4723D

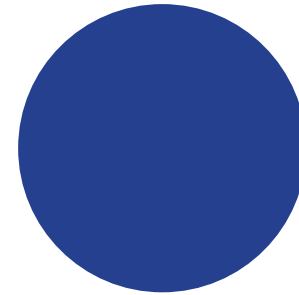
E1

...

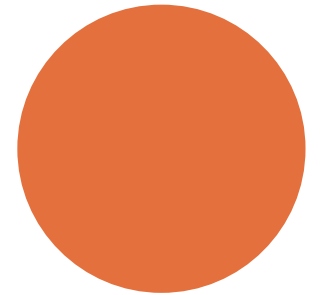
...

HEX: 00AEEF

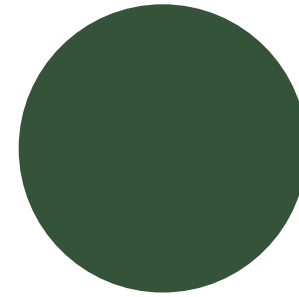
A1



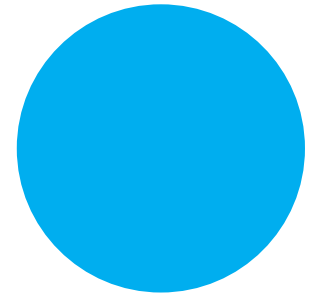
D1



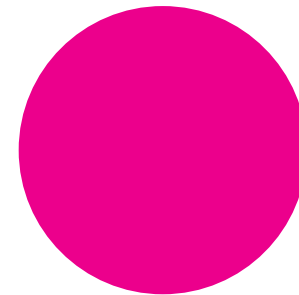
B1



E1



C1



materiaalgebruik

A1

\*\*\*

\*\*\*

\*\*\*

B1

\*\*\*

\*\*\*

\*\*\*

C1

\*\*\*

\*\*\*

\*\*\*

D1

\*\*\*

\*\*\*

\*\*\*

E1

\*\*\*

\*\*\*

\*\*\*

F1

\*\*\*

\*\*\*

\*\*\*

G1

\*\*\*

\*\*\*

\*\*\*

H1

\*\*\*

\*\*\*

\*\*\*

B1

F1

C1

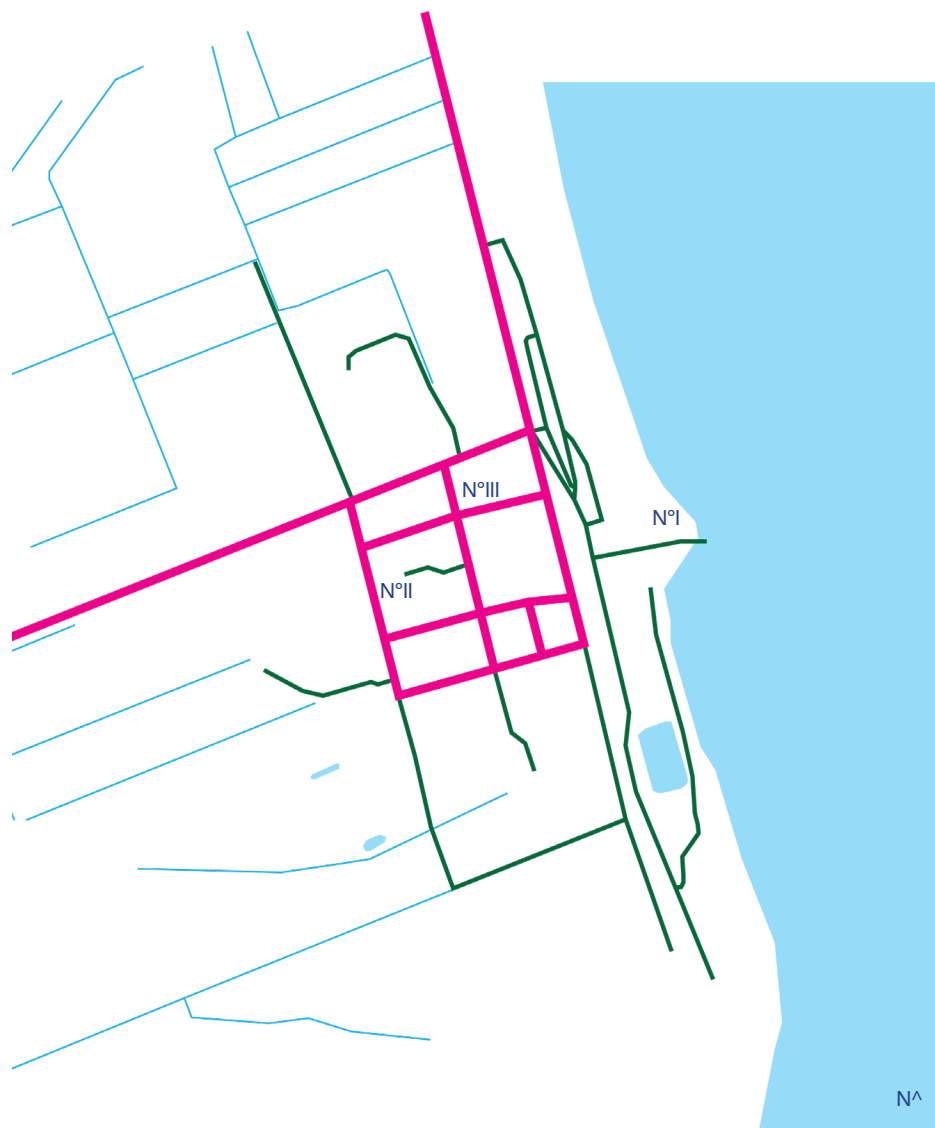
G1

D1

H1



Nº1 ONTWERP



DOEL

PLAN  
LOCATIES

Nº1 ONTWERP



DOEL

SITEBEZOEK  
LOCATIE Nº1





DOEL

SITEBEZOEK  
LOCATIE Nº1



DOEL

SITEBEZOEK  
LOCATIE Nº1





DOEL

SITEBEZOEK  
LOCATIE N°II



DOEL

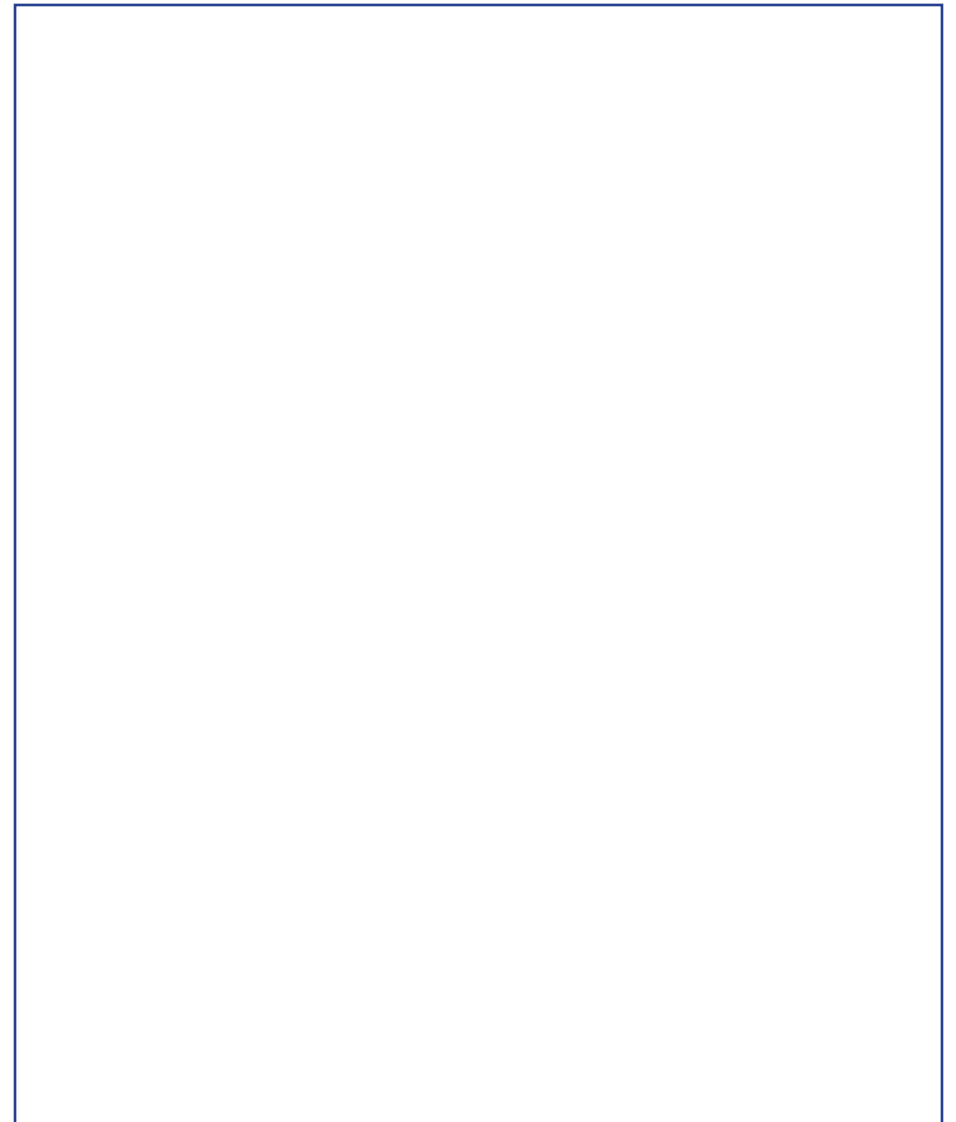
SITEBEZOEK  
LOCATIE N°III



...

...

...



...

...

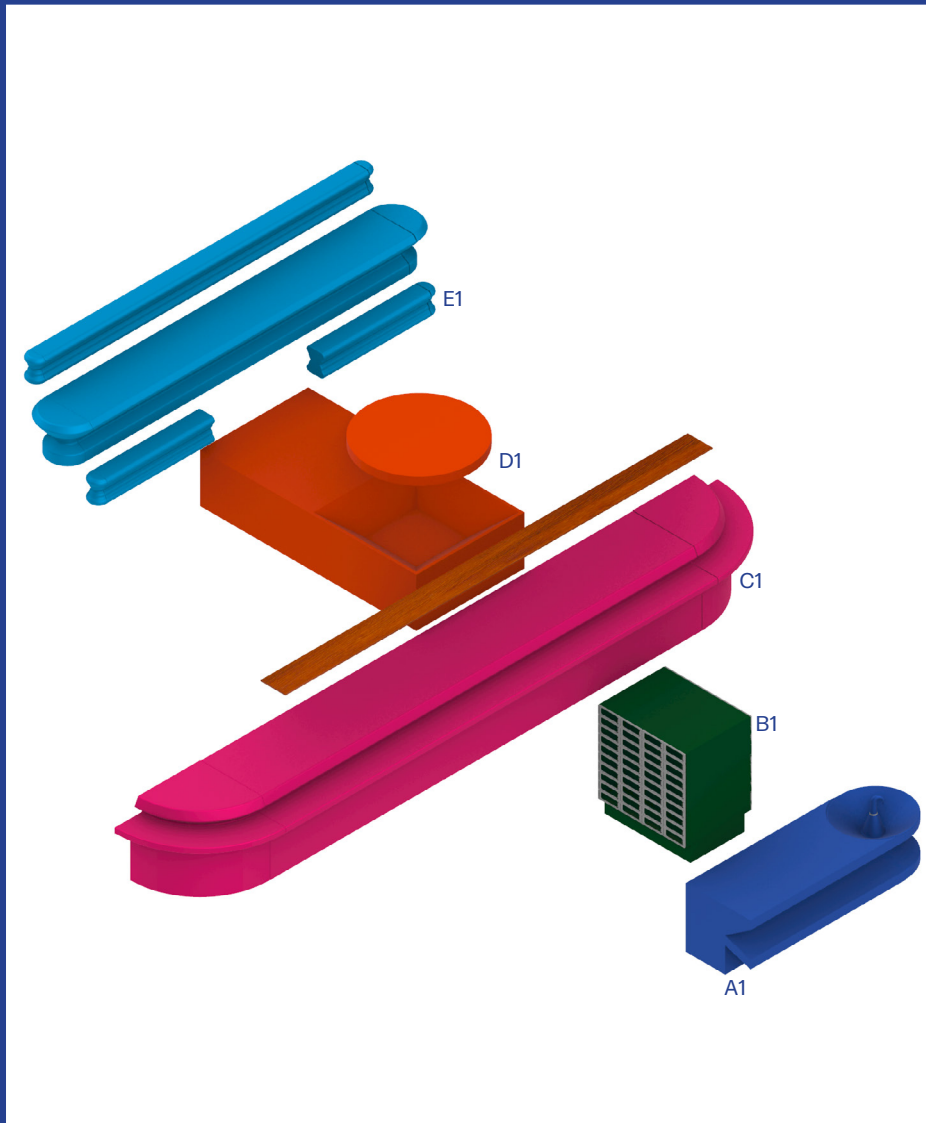
...

# Nº II

# ONDERDELEN



## N°II ONDERDELEN



...

...

...

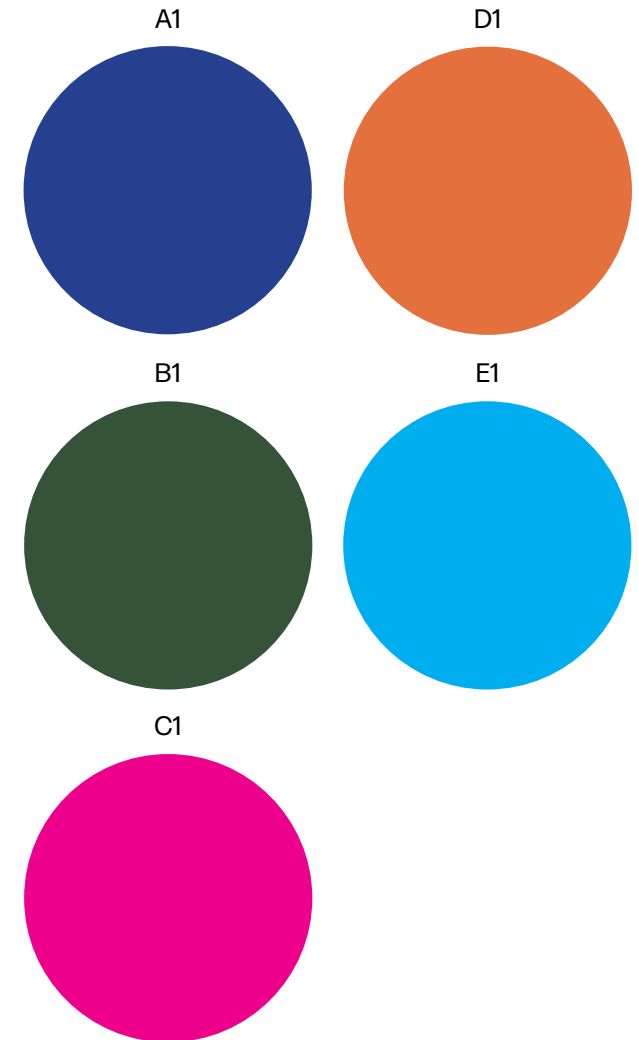
A1  
WATER  
SPOELBAK  
HEX: 25408F

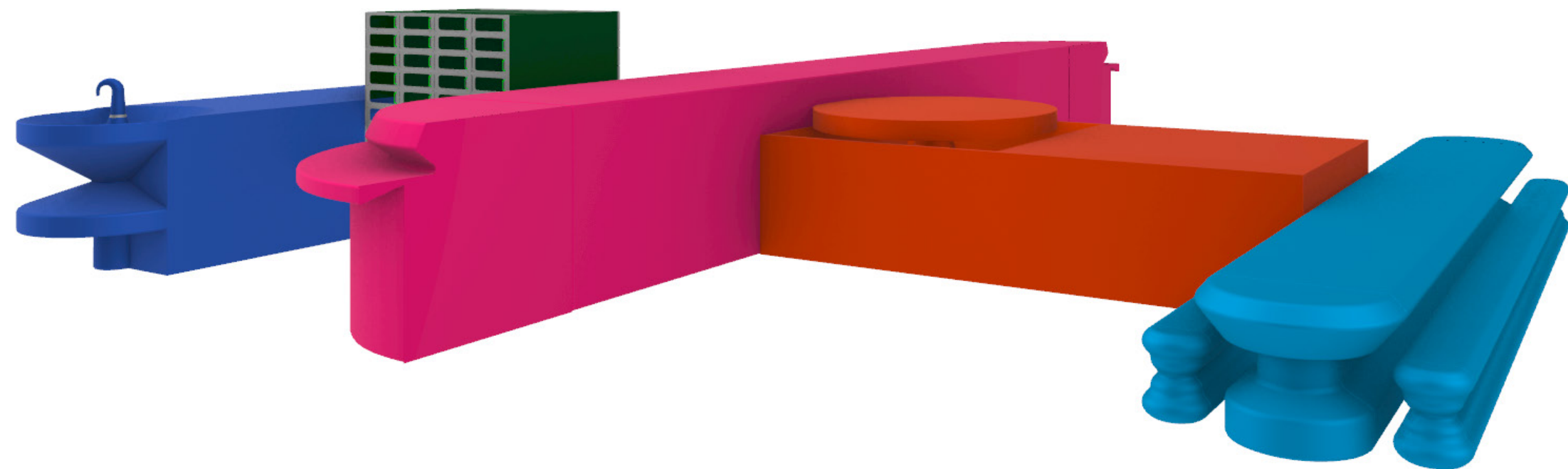
B1  
STOCKAGE  
KOELCELLEN  
HEX: 345339

C1  
SNIJVLAK  
CUTTING BOARD  
HEX: EC008C

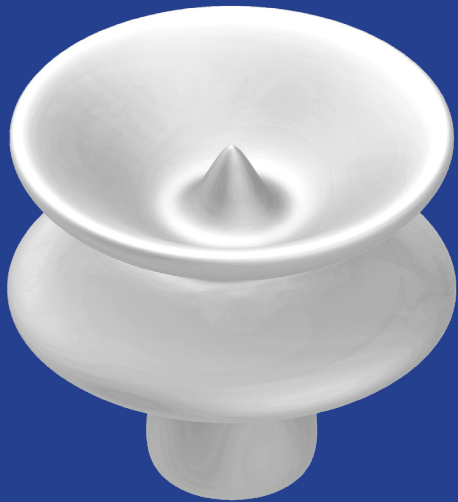
D1  
VUUR  
BARBECUE/INDUCTIE  
HEX: E4723D

E1  
TAFELEN  
EETPLEK  
HEX: 00AEEF

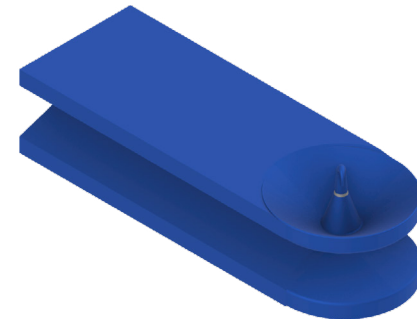




water

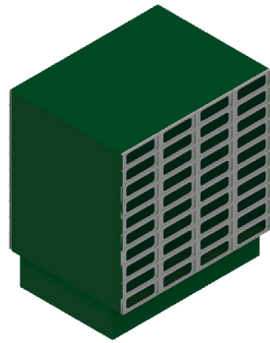


AFMETINGEN OBJECT



FORM 7

REVOLUTION BY VERTICAL AXIS

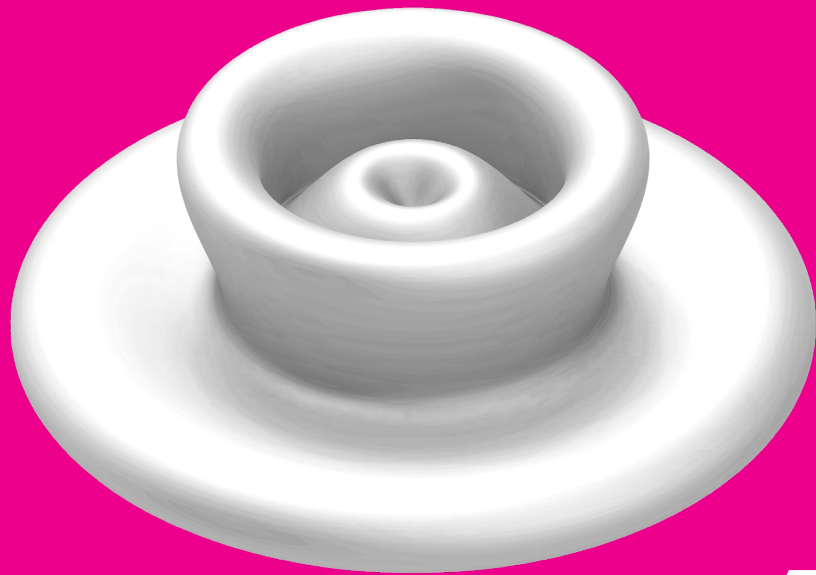


...

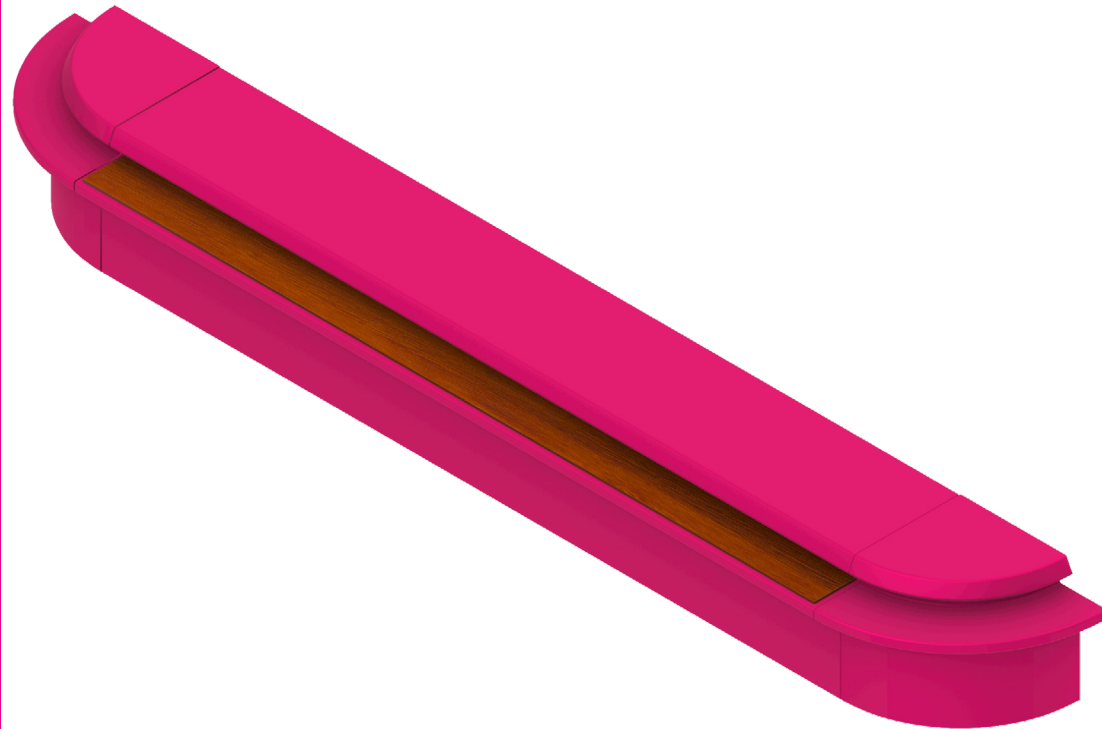
# stockage

AFMETINGEN OBJECT

# snijvlak



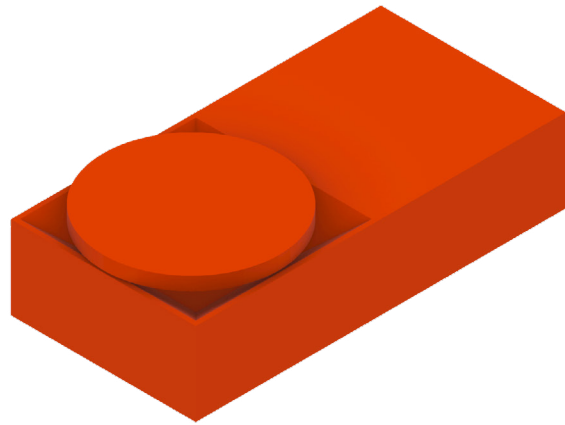
AFMETINGEN OBJECT



FORM 6

REVOLUTION BY HORIZONTAL AXIS

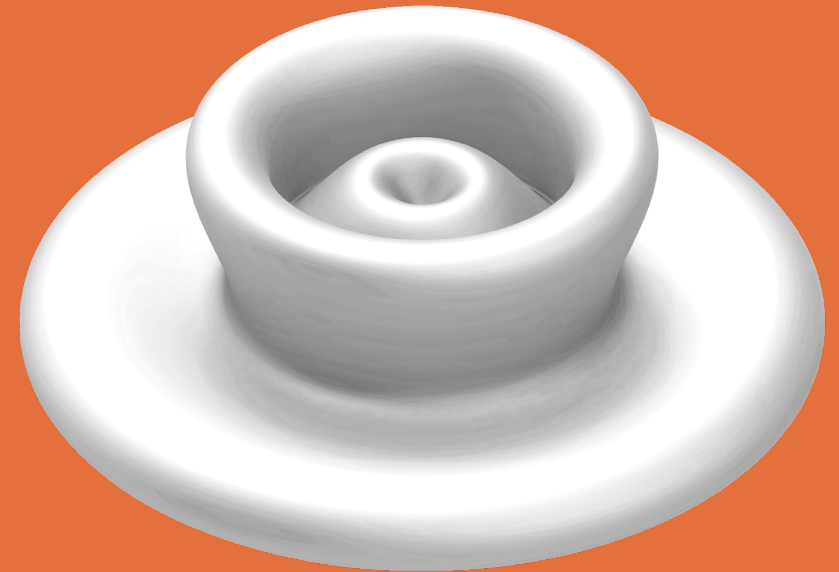




FORM 6

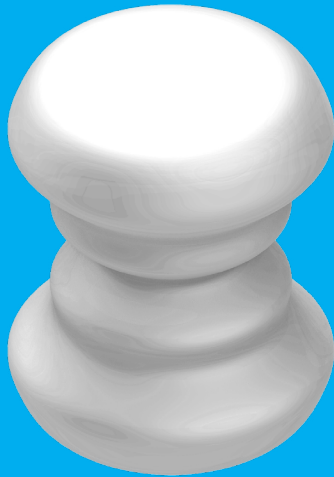
REVOLUTION BY HORIZONTAL AXIS

VUUR

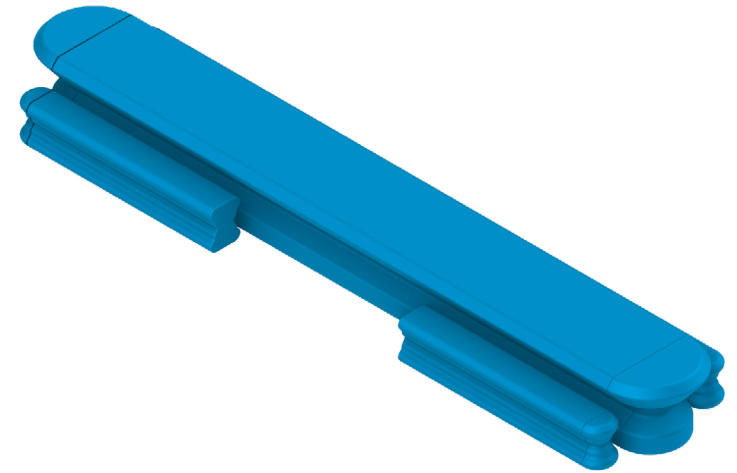


AFMETINGEN OBJECT

# tafelen



AFMETINGEN OBJECT

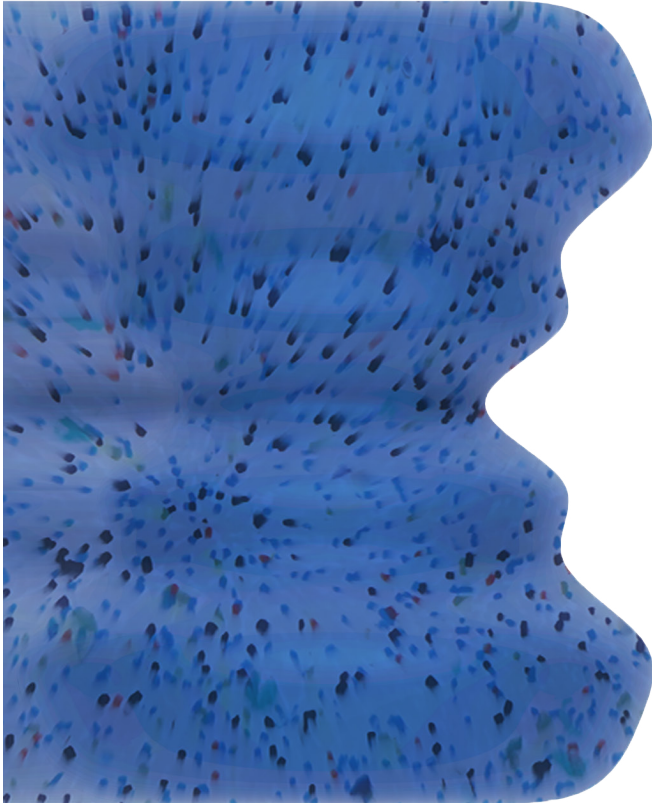


FORM 9 + FORM 1

REVOLUTION BY VERTICAL AXIS

COMPOST?

...  
...



MATERIAL MOCKUP

BLAUW  
GESPIKKELD

# NºIII TEKST



# ONTWERP N° I

# ONDERDELEN N° II

# TEKST N° III

CREDITS: \* SARAH LEYMAN \* THE BRIGHT SIDE OF THE MOON \* ON CONTINUITY AND IDENTITY  
\* A JOURNEY TO THE MOST HOPEFUL PLACES ON EARTH AND BACK \* TOM CALLEBAUT \* KLAAS  
VANSLEMBROUCK \* HILDE BOUCHEZ \* IGNAAS BACK \* EDITION N°5 \* SEMESTER 2 \* KULEUVEN \*  
FACULTEIT ARCHITECTUUR \* MASTER INTERIEURARCHITECTUUR \*\* 2023/2024 \*\* BELGIUM ●